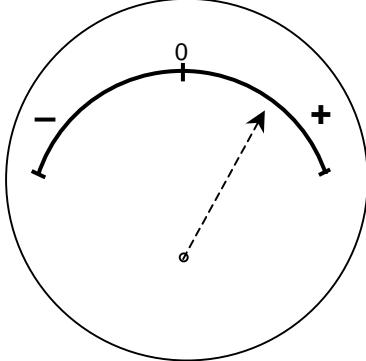
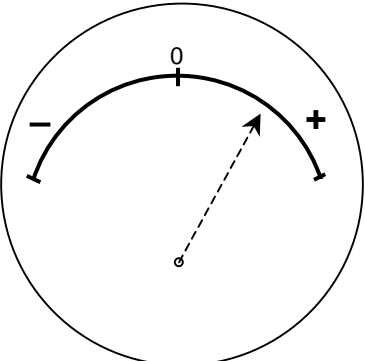
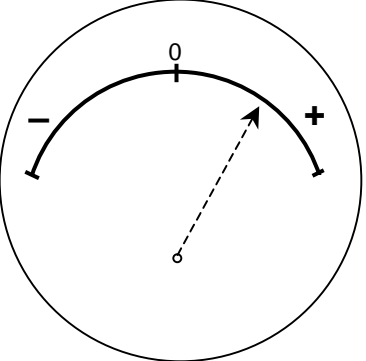


# Ex 9 What is the current?

Names

<p>1 (a) <b>Point B</b> <u>before</u> the switch is closed</p> 	<p>(b) <b>Point C</b> <u>before</u> the switch is closed</p> 	<p>(c) <b>Point C</b> <u>after</u> the switch is closed</p> 
--	---	---

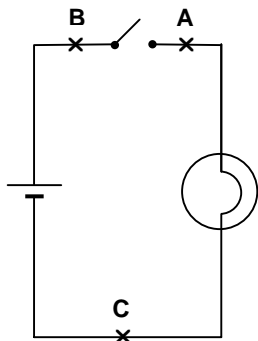


Fig. 1

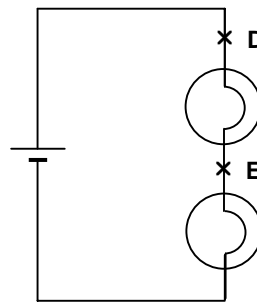


Fig. 2

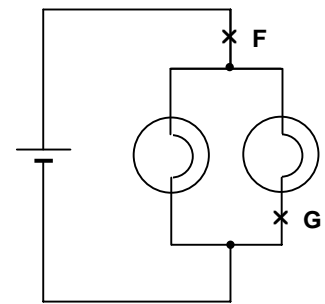
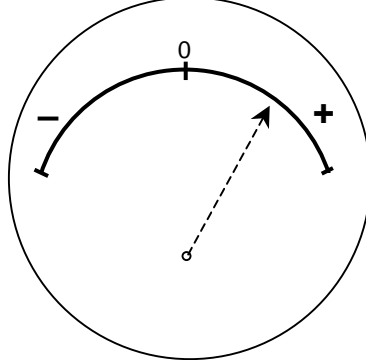
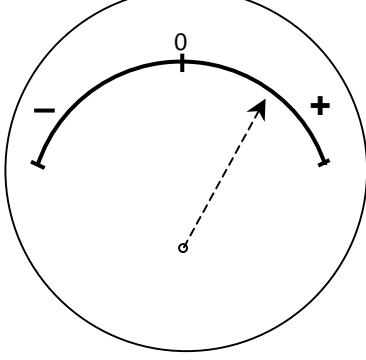
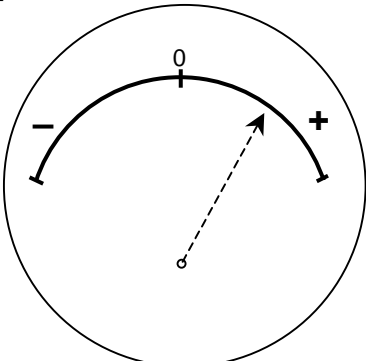
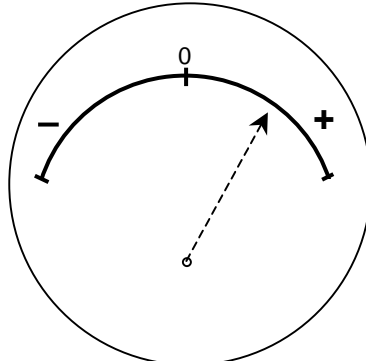


Fig. 3

<p>2 (a) <b>Point D</b></p> 	<p>(b) <b>Point E</b></p> 
<p>(c) <b>Point F</b></p> 	<p>(d) <b>Point G</b></p> 

# Ex 9 What is the current? (continued)

Names

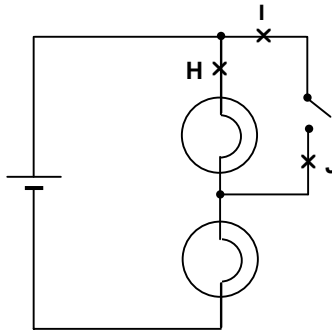
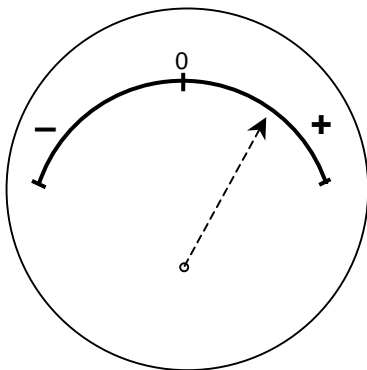


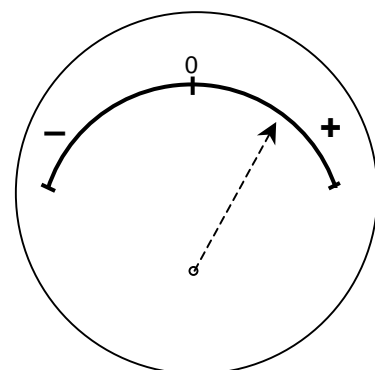
Fig. 4

3

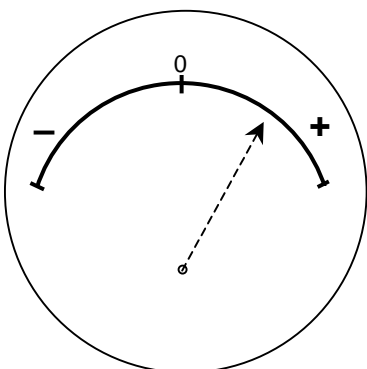
(a) **Point H** with the switch open



(b) **Point I** with the switch open



(c) **Point H** with the switch closed



(d) **Point J** with the switch closed

